

# STANDARD HOPPER DRYER

## FEATURE:

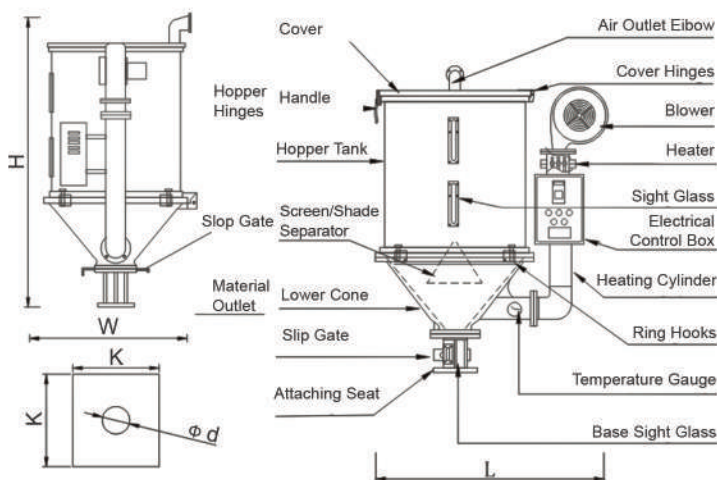
- Contact parts made of stainless steel.
- Precisely cast aluminum hull, smooth surface and good performance of maintaining temperature setting.
- Low noise blower, installed air filter with (optional) purity guaranteed.
- Material tank installed with side glass for inspection.
- Curve heating cylinder designed to avoid the burning caused by powder pile;
- Installed with proportional deviation display thermostat, to control temperature accurately.
- High-temperature type for 50-1500kg available, with double layer hopper tank, stainless steel heating cylinder, cooling type heater, high temperature resistance blower;
- Hopper specially designed for easy opening, suitable for all mechanical arm.



**YT-G50KG**



**YT-GD50KG**



## SPECIFICATIONS

Model	Capacity (KG)	Heating Power (KW)	Blower (W)	Voltage (V)	Dimensions (mm)	( KxKxD ) Base Size (mm)	Approx.Net Weight (KG)
External Dimensions	12	1.8	85	220/2Φ	640x440x740	110x110xΦ40	22
Inner Dimensions	25	3.5	135	220/2Φ	800x420x850	150x150xΦ73	34
Motor (KW)	50	4.5	135	380/3Φ	900x600x950	160x160xΦ73	45
Power(KW)	75	5.5	210	380/3Φ	900x600x1050	160x160xΦ73	56
Tray Quantity	100	6.5	215	380/3Φ	1000x650x1050	177x177xΦ81	68
Tray Size (MM)	150	9	320	380/3Φ	1300x700x1100	177x177xΦ81	78
Weight (KG)	200	12	320	380/3Φ	1350x800x1400	200x200xΦ83	110
Capacity (KG)	300	15	320	380/3Φ	1300x900x1550	230x230xΦ114	150
Tray Material	400	18	410	380/3Φ	1400x950x1600	280x280xΦ120	170
Temperature Range	600	21	1030	380/3Φ	1550x1150x1850	281x281xΦ134	280
Temperature Distribution	800	24	2200	380/3Φ	1770x1180x2540	280x280xΦ135	380

"GD" stands for high temperature insulation type of dryer.

We reserve the right to change specifications without prior notice